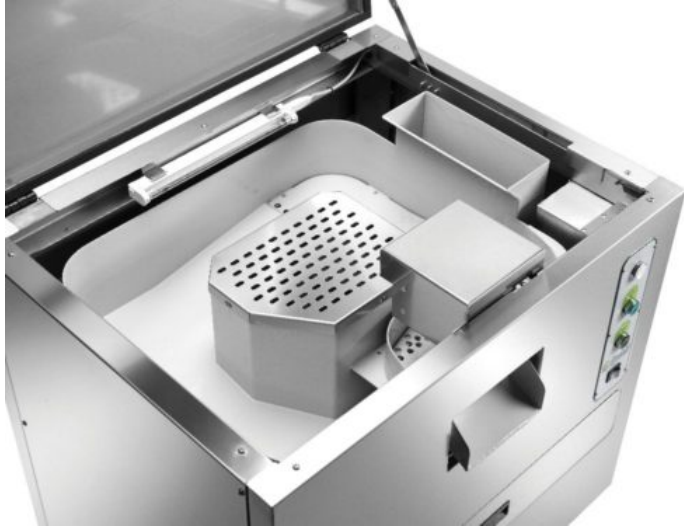


## CUTLERY DRYER-POLISHER ALP300

SKU: ALP3000



### ADDITIONAL INFORMATION

<b>Power Kw</b>	<u>0,5 kW (0,7 HP)</u>
<b>power supply</b>	<u>230V/1N/50Hz</u>
<b>Corn cob</b>	<u>1,5 Kg</u>
<b>Hourly cutlery production</b>	<u>3000 h/N.</u>
<b>Machine dimensions (l x l x h mm)</b>	<u>500 x 600 x 400(h) mm</u>
<b>net weight (kg)</b>	<u>43</u>
<b>gross weight (Kg)</b>	<u>53</u>
<b>packaging dimensions (l x l x h mm)</b>	<u>550 x 650 x 500(h) mm</u>
<b>packaging volume (m3)</b>	<u>0.179</u>

Cutlery dryer-polisher is created to quickly dry and polish wet cutlery straight out of the dishwasher. Thanks to the synergy of the internal bowl vibrations and to the friction of the corncob powder (completely vegetable product, non-toxic, treated with special antibacterial agents), the cutlery comes out perfectly dry and shiny, with no limescale spots, thus avoiding lengthy polishing by hand. Made of stainless steel AISI 304 - equipped with a UV lamp that reduces the bacterial load in the cutlery even after washing - internal bowl coated with impact-resistant resin certified for food use - capacity of 50 pieces per minute.

